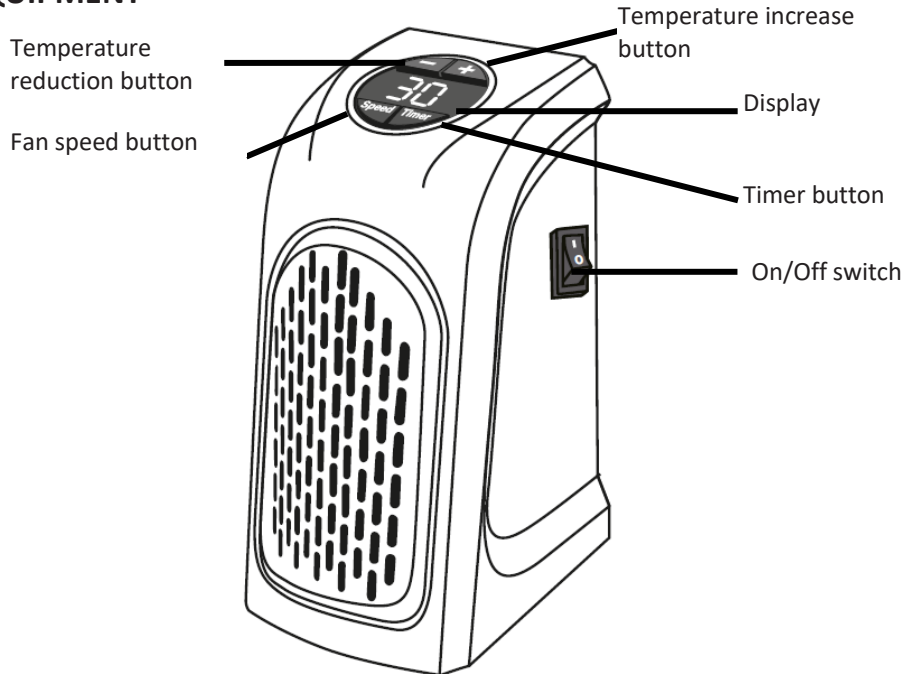


Thank you for purchasing our equipment. Please read this manual carefully and heed the safety warnings and instructions before installing, using or repairing the equipment. This will ensure not only the protection of persons, but also the long life of the equipment.

DESCRIPTION OF EQUIPMENT



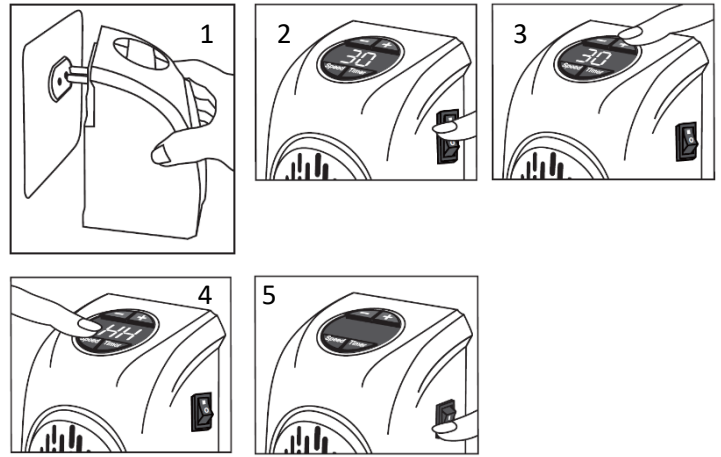
SAFETY NOTICE

When using electrical appliances, basic safety precautions should always be observed to reduce the risk of fire, electric shock and personal injury, including the following:

- To reduce the risk of fire or electric shock, plug the device into a power outlet.
- To reduce the risk of fire or electric shock, do not use the device with an extension cord.
- Do not plug anything else into the same circuit. If you are unsure if you meet this specification, consult a certified electrician before use. Failure to comply may result in fire, overheating, malfunction, property damage and personal injury.
- Do not connect the appliance to extension cords, surge protectors, timers, direct circuit breakers, or to an outlet with other appliances connected to the same outlet. Failure to do so may result in risk of overheating, malfunction, property damage and personal injury.
- The device heats up during use. Wear gloves when moving it to avoid burning your skin.
- Do not leave the equipment unattended. Extreme caution is required if children are using the device or if pets are nearby.
- Always unplug the device when not in use.
- Do not use the device with a damaged plug, if damaged or dropped. If the device is damaged, repairs must only be carried out by the manufacturer's authorised service centre.
- Do not use the device outdoors.
- The device is not intended for use in bathrooms, laundry rooms or similar rooms. The equipment is not intended for use in locations where GFCI outlets are used.
- Never place the device where it could fall into a bathtub or other container of water.
- To turn the device off, turn the switch to the off position and unplug the power cord from the power outlet.
- Prevent objects from entering the ventilation or exhaust opening. Do not cover any part of the equipment.
- Do not place the device on soft surfaces such as a bed. Choose a suitable location with a firm base and approximately 1 m of clearance on all sides.
- The device has hot parts inside. Do not use it in areas where gasoline, paints and other flammable substances are used or stored.
- Use this device only as described in this manual. Any other use not recommended by the manufacturer may cause fire or injury.

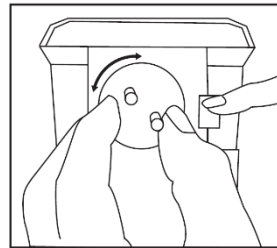
INSTALLATION

1. Plug the device into a socket. The plug can be rotated for the most convenient placement on the wall (see below: Plug rotation adjustment).
2. Switch On/Off. switch to the On position to start the device.
3. Set the desired temperature with the "+" / "-" buttons to increase / decrease the temperature. The temperature range is 15°C ~ 32°C and will be shown on the display.
4. Set the desired fan speed. Press the "Fan Speed" button and select HH (High) or LL (Low). It will appear on the display.
5. If you are going to turn the device off, switch On/Off. switch to the OFF position and unplug the power cord from the power outlet. Store the equipment in a cool, dry place.



PLUG ROTATION ADJUSTMENT

1. Press and hold the button to rotate the fork.
2. Carefully turn the forks to the desired position.
3. Release the fork rotation button to lock the position.



TIMER SETTINGS

The device has a built-in timer that allows you to select the time after which the device will switch off.

1. When the device is running, press the Timer button.
2. Press the Timer button repeatedly to set the time after which the device will switch off. Can be set between 1 - 12 hours.
3. Once you have selected the desired value, release the Timers button to complete the setting.
4. To cancel the timer, switch off the device.

Note: The default timer value is 12h.

MAINTENANCE

Switch off and disconnect the device from the power outlet before servicing!

- Clean the outside with a non-abrasive damp cloth. If necessary, use mild soap. Dry with a soft cloth

Warning:

- **Do not use** alcohol, petrol, abrasive powders, furniture polishes or coarse brushes to clean the equipment. Doing so could damage the heater cover.
- **Do not immerse** the device in water.
- After cleaning, wait until the device is completely dry.

If the device stops working due to overheating, unplug the device from the socket and plug it back in after a while.

TECHNICAL PARAMETERS

- Power supply: AC220-240V, 50/60 Hz
- Consumption: 400W

The product has been issued with a CE declaration of conformity in accordance with the applicable regulations. On request from the manufacturer: info@solight.cz, or downloadable from www.solight.cz/en.



SOLIGHT

Solight Holding, s.r.o., Na Brně 1972, Hradec Králové 500 06, Czech Republic.